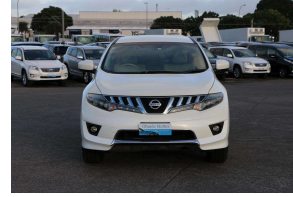


# 2010 Nissan Murano 250XV. Leather. Rear



## VEHICLE INFORMATION

### Cash Price

Includes GST

# \$12,950

+ on-road-costs of \$350

Finance this vehicle  
from only

# \$51.72

per week\*

Total Amount Payable

\$17,435.94

finance  
**NOW**



Gain peace of mind  
with Mechanical  
Breakdown Insurance.  
Ask us how.

### Body

5 door, RV-SUV

### Odometer

102,000 km

### Engine

2500 cc

### Fuel Type

Petrol

### Transmission

Automatic, Front Wheel

### Wheels

Factory Alloys

### VIN

7AT0DH74X21001645

### Reg No.

-

### Ext Colour

Pearl White

### History

-

### Seats

5 seats, Leather

### Interior

Beige

### Audio

CD Player

### Stock ID

7939

### Exterior Features

- » Alloys
- » Central Locking
- » Electric Mirrors
- » Face Lift Model
- » Fog Lights
- » Keyless Entry
- » Rear Wiper
- » Remote Locking
- » Reversing Camera
- » Spoiler
- » Twin Exhaust

### Interior Features

- » Air Bag(s)
- » Air Conditioning
- » Alarm
- » Car Stereo
- » CD(s)
- » Central Locking
- » Child seat anchor points
- » Climate Control
- » Digital Dash
- » Digital Display
- » DVD

### Mechanical Features

- » ABS Brakes
- » Cruise Control
- » Engine Button Start
- » Electric Mirrors
- » Electric Windows
- » Immobiliser
- » Power Steering
- » Traction Control



GRANDE MOTORS - Mt Wellington, Phone 021 127 5127 or 021 055 0070, Email office@grandemotors.co.nz  
430 Mt Wellington Highway, Mt Wellington, Auckland 1060, New Zealand  
www.grandemotors.co.nz

\* Finance calculation based on a 60 month term, 30% deposit and with an example annual fixed interest rate of 13.2%. Actual interest rate may be higher or lower. Includes an establishment fee of \$495.00. Full term total amount payable of \$17,435.94. Estimate only, not an offer of finance. Terms, conditions and lending criteria apply.